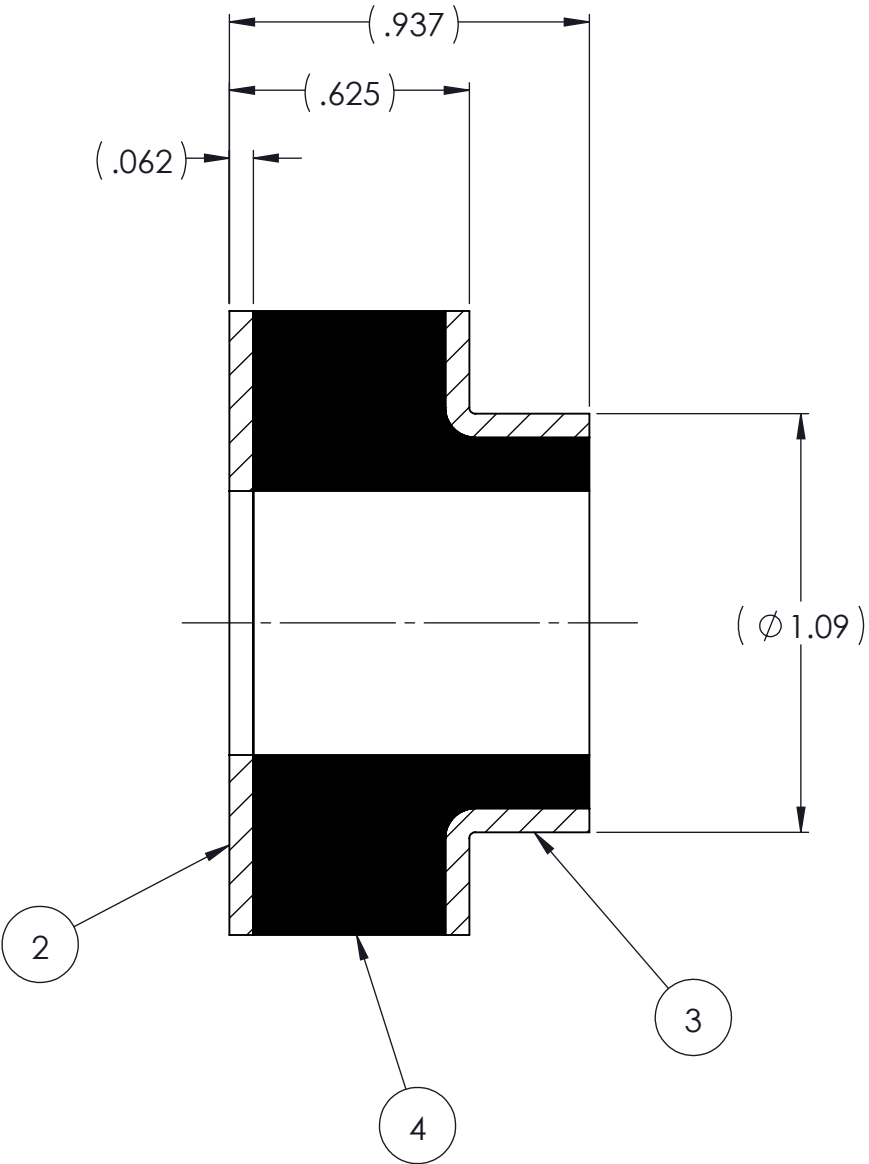
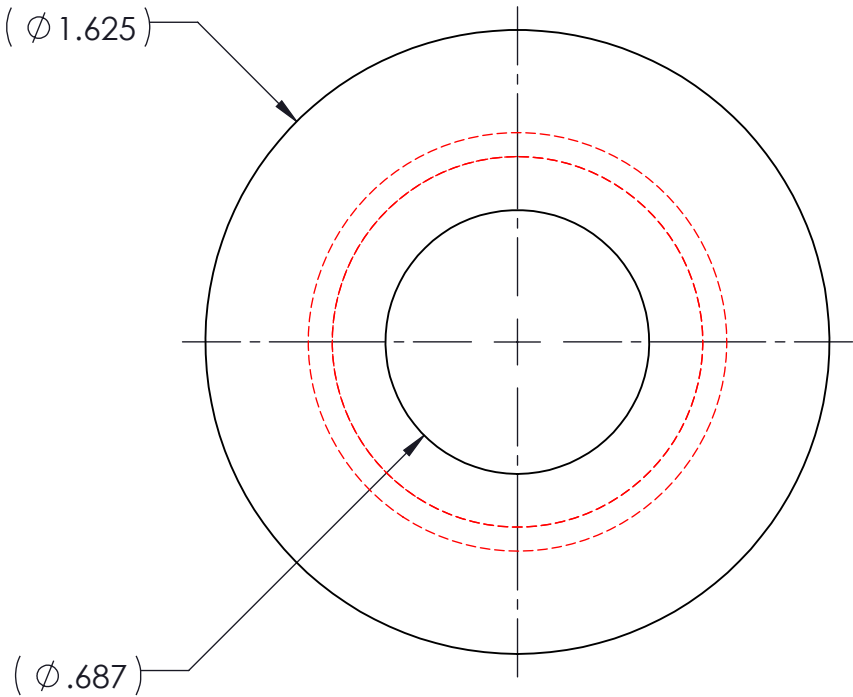
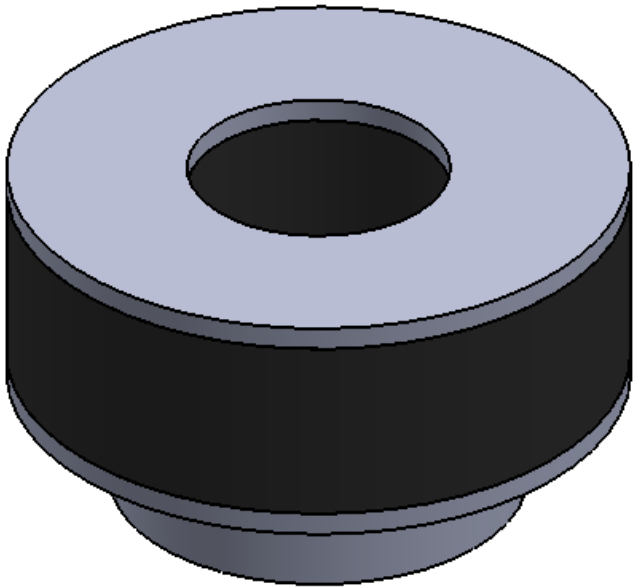



REVISIONS			
REV.	DESCRIPTION	DATE	APPROVED
1	INITIAL RELEASE OF DRAWING	7/11/2014	BS
2	SHOW REVISIONS TO ITEM 3 AND HEIGHT IS .625, WAS .523.	8/18/2014	BS



NOTES:

- 1 MATERIAL: ELASTOMER AND DUROMETER OF 40, 50, 60 OR 70 TO BE SPECIFIED.
- 2 ALL DIMENSIONS ARE REFERENCE.

PROPRIETARY AND CONFIDENTIAL THE INFORMATION CONTAINED IN THIS DRAWING IS THE SOLE PROPERTY OF KARMAN RUBBER. ANY REPRODUCTION IN PART OR AS A WHOLE WITHOUT THE WRITTEN PERMISSION OF KARMAN RUBBER IS PROHIBITED.	SIGNATURE		DATE	UNLESS OTHERWISE SPECIFIED: DIMENSIONS ARE IN INCHES TOLERANCES: .X = .XX = ± 0.031 .XXX = ANGLES = ± 1° INTERPRET GEOMETRIC TOLERANCING PER: ASME Y14.5M-1994
	DRAWN	B. SENEAL	07/11/2014	
	CHECK	S. BROWN	07/11/2014	
	ENGR	B. SENEAL	07/11/2014	
	QA			
	STRESS			
	APPR			



KARMAN RUBBER
VIBRO-INSULATORS®
FOR CONTROLLING NOISE, SHOCK & VIBRATION

SIZE	CAGE CODE
B	
DO NOT SCALE DRAWING	

AR	ELASTOMER	K59-4	1	4
1	M9M206B	M9M206B		3
1	M9M206A	M9M206A		2
	K59	K59		1
QTY.	DESCRIPTION	PART NUMBER	MATERIAL OR NOTES	ITEM

TITLE: K59 SERIES VIBRO-INSULATOR WWW.KARMAN.COM			
DWG. NO. K59		REV 2	
SCALE: 2:1	WEIGHT: 1.90 OZ.	SHEET 1 OF 1	